



Ray White.

marketupdate

October 2012

Mangere Bridge

Welcome to my market update on
Mangere Bridge.
Enjoy reading.

Kind Regards,
Denise

011 sales
in Sep 2012

prior month Aug 2012 / 9 sales

22% 

last year Sep 2011 / 5 sales

120% 

average price

\$497,000

SOURCE: AU sales from Australian Property Monitors.
NZ sales from Real Estate Institute of New Zealand.

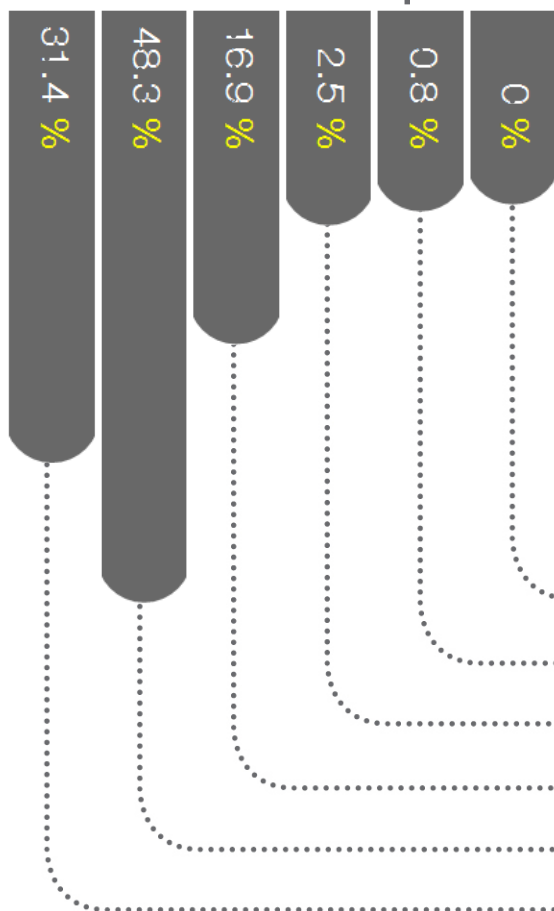
23%
down on Aug 2012
07%
up on Sep 2011

Mangere Bridge

118
sales

12mths to Sep 2012

78%
of sales were
houses



Top Sale Last Month

Mangere Bridge

Sold for
\$701,500



more than \$1.5M

\$1.0M - \$1.5M

\$800k - \$1.0M

\$600k - \$800k

\$400k - \$600k

less than \$400k



Contact Details

Denise Wong
Salesperson
m. 027 249 4148

e. denise.wong@raywhite.com
w. www.raywhite.com



Ray White.
marketupdate